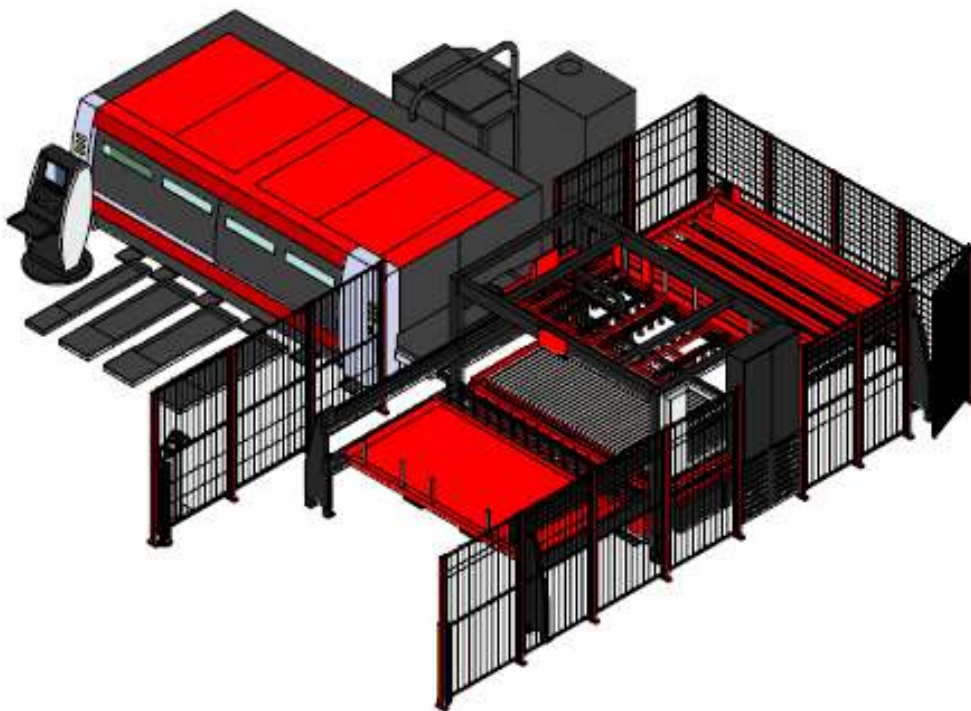


**Amada FLC 3015 AJ 2kW + MP FLEXit 3015**

Year 09/2013

Machine hours: about 42.000h



**Amada FLC 3015 AJ 2kW:****Technical data machine:**

Working range: 3100 x 1550 x 100 mm  
Table loading weight: 920 kg  
Positioning speed (X/Y/Z): 120/120/120 m/min  
Drive technology (X/Y/Z): linear drives  
Max. acceleration: 30 m/s<sup>2</sup>  
Laser principle: Flying optic  
Positioning tolerance: +/- 0,01 mm  
Positioning spread: +/- 0,005 mm  
Machine weight: 11.000kg

**Oscillator:**

Laser source: Laser diode-pumped fibre laser  
Type: AJ-2000  
Laser power: 2000 Watt  
Laser wave length: 1,08 µm  
Stability: +/- 2%  
Pulse frequency: 1 – 10.000 Hz  
Duty range: 1-100%

**Control:**

Type: AMNC-F  
Screen: touchscreen  
Interfaces: network, USB

**Equipement:**

Automatic pallet changer  
High pressure cutting device (CleanCut)  
Aluminium cutting device  
Automatic gas pressure adjustment  
NC-focus control  
Sensor cutting head  
Diode for positioning  
Cutting process monitoring  
Safety device  
Cooling Cut

**Peripheral devices:**

Transformator  
Cooling unit  
Dust collector  
Pallet changer  
Operator panel

**Max. material thickness:**

Mild steel:	12 mm
Stainless steel:	8 mm
Alumino:	6 mm
Brass:	4 mm
Copper:	3 mm

**Options:**

OVS  
Automatic nozzle changer  
Conveyor belt longwise  
Multicoater for dust collector







## Amada MP FLEXit 3015:



### Technical data loading/unloading unit:

Numbers of cutting pallets: 2 pieces

Min. sheet size: 2000 x 1000 mm

Max. sheet size: 3050 x 1525 mm

Sheet thickness: 0.8 – 25 mm

Max. sheet weight: 920 kg

Cycle time: 69 s

Type of fork unload: single fork unload with roller chains

Raw material stack height: 400 mm

Unloading stack height: 300 mm

Min. part size: 180 x180 mm

Machine total height: 2650 mm

### Options:

2. output station



